



www.elpro.com

The Datalogger Specialists

HAMSTER-E

the small ELPRO datalogger



ELPRO-BUCHS AG
CH-9471 Buchs SG



ELPRO MESSTECHNIK GmbH
DE-73614 Schorndorf

ELPRO SERVICES Inc.
Marietta, OH 45750
USA

home: www.elpro.com

Hamster, the small datalogger:

ELPRO dataloggers belonging to the HAMSTER-E series are optimized for recording temperature and relative humidity. The data is stored in the datalogger's internal memory and can be loaded to the PC simply and quickly via serial interface. A small optical cable adapter is used for the data transfer. As a result, the communication interface is kept absolutely water-resistant.

Primary applications:

- Transport of low-temperature and deep-frozen goods
- Warehouses, cold-storage warehouses
- Cold storage areas for fresh food products
- Display cases and store rooms for meat products
- Museums and galleries
- Technical processes
- Air-conditioned areas



Hamster-E ET1 Art.Nr. 4901
Hamster-E ET1-D Art.Nr. 4904 (with display)

- Robust, shock-resistant casing; easy to mount with lockable mounting bracket
- ET1: Temperature recording with internal probe from -40°C to +70°C
 Alarm and status with LED in small window
 Casing IP 67-sealed (dustproof, temporary submersion in water possible)
- ET1-D: Temperature recording with internal probe from -30°C to +55°C
 Alarm and values in display
 Casing IP 65-sealed (dustproof, protection against water jets)



Hamster-E ET2 Art.Nr. 4902

- Temperature recording with 2 external probes from -90°C to +260°C
- Temperature range for the datalogger -30°C to +55°C
- For external temperature probe; type PT1000, 2-wire
- Large 2 line display
- Alarm and status in display
- "Battery low" display
- Robust, shock-resistant casing, easy to mount with lockable mounting bracket
- Casing IP 65-sealed (dustproof, protection against water jets)



Hamster-E EHT1 Art.Nr. 4903

- Temperature recording from -30°C to +55°C and rel. humidity 5% - 95% rH
- Universal probe mounted at unit
- Large 2 line display
- Alarm and status in display
- "Battery low" display
- Robust, shock-resistant casing, easy to mount with lockable mounting bracket
- Casing IP 30-sealed (protected against solid foreign bodies 2.5 mm diameter)

General technical data:

- Large data memory with 32,000 measured values
- Small current consumption with typical battery life of 2-3 years
- Battery change by user
- Selectable recording interval from 10 seconds to 24 hours
- Start/stop and loop memory mode

Ambient temperature

-30°C .. +55°C (Hamster ET1 -40°C .. +70°C)

Waterproof rating	ET1	IP67
	ET2, ET1-D	IP65
	EHT1	IP30

	Measure range	Resolution	Accuracy
ET1 internal probe	-40°C .. +70°C	0.2°C	+/- 0.5°C
ET1-D internal probe	-30°C .. +55°C	0.2°C	+/- 0.5°C
ET2 with probe class B	-50°C .. +100°C	0.2°C	+/- 0.5°C
	-90°C .. +260°C	0.2°C	+/- 1.0°C
EHT1 temperature	-30°C .. +55°C	0.2°C	+/- 0.5°C
rel. humidity	5%rH .. 95%rH	0.2%rH	+/- 3%rH

Casing dimensions: ET1 64x93x27mm, ET2 64x93x29mm, EHT1 64x93x43mm

Temperature probes:


Part. No.: 4960
PT1000 plug-on temperature probe, -30° .. +55°C, can be plugged directly to Hamster-ET2 logger



Part. No.: 4950-SLxx
PT1000 DIN B temperature probe; soft rubber, watertight, -70° .. +105°C, LS=20mm, D=5mm, cable length 2m or 10m



Part. No.: 4953-SLxx
PT1000 universal temperature probe, -50° .. +180°C, LS=50mm, D=6mm, silicone cable length 2m or 10m



Part. No.: 4951-SL04
PT1000 temperature probe, 0° .. 260°C, for dry applications only, LS=50mm, D=6mm, glass fiber cable length 4m



Part. No.: 4952-SL03
PT1000 needle temperature probe, -30° .. +140°C, with handle, LS=100mm, D=4mm, silicone cable length 3m



Part. No.: 4956-L0
PT1000 DIN A ML temperature probe, -90° .. +260°C, LS=350mm, D=3mm, bendable, Tmax connector=90°C, without cable



Part. No.: 4957-L0
PT1000 DIN A ML temperature probe, -90° .. +260°C, LS=150mm, D=3mm, bendable, Tmax connector=90°C, without cable

Accessories:


Part.No.: 4910
Wall bracket for the Hamster-E, lockable, including padlock

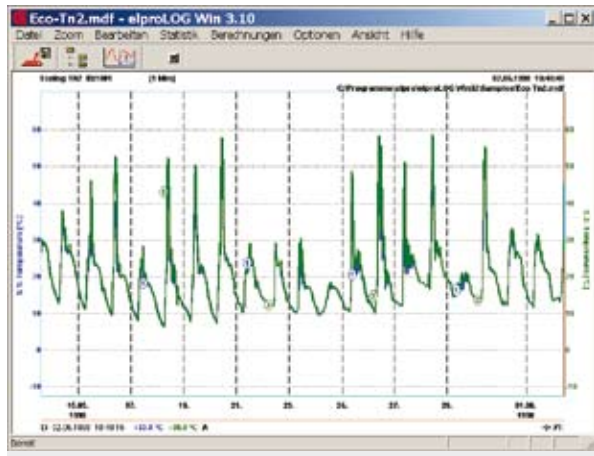


Part.No.: 4912
PC data cable for Hamster-E, for PC evaluation, RS232, DB9

Extension cables for 4956 / 4957:

Part. No.: 4915-S02
Extension cable PT1000, 3-wire, L= 2m, connector M8x1 f/f, Tmax= 90°C

Part. No.: 4915-S05
Extension cable PT1000, 3-wire, L= 5m, connector M8x1 f/f, Tmax= 90°C



elproLOG evaluation software functions

- Programming for all ELPRO dataloggers
- Datalogger readout
- Printout of all screens and print preview
- Clearly laid out graphic representation
- Clearly laid out table formats
- Status printout with information about datalogger
- Statistical data, histogram visualization
- Export of data and graphics
- Send E-mail: data file per E-mail to receiver

elproLOG, the PC software for all ELPRO dataloggers

Simple, fast, reliable, plug & play

For all ELPRO dataloggers; self-adapts to the various units

Can be adapted to match requirements

Clearly laid-out documents can be created simply and effectively

elproLOG software

Part No. 2338-CDV full version

Part No. 2338-CDU update

elproLOG QLS Software for FDA, GLP, GMP

Part No. 2339-BL, basic license

Part No. 2339-FL, follow license

for all Windows PCs:

WNT4, W2000, XP

Automatic installation from the CD

Range of ELPRO dataloggers:



ECOLOG quality dataloggers

For temperatures (NTC and PT100) from -200°C .. +550°C, relative humidity 0%..100%, programmable alarm functions, one-year memory capacity (64,000 measured values), large display and multifunctional keypad.



can be delivered as EEx models



The HAMSTER-A datalogger

The waterproofed datalogger for temperature recording. With a memory capacity for 64'000 measured values, washable and submersible.



Universal dataloggers HOTBOX-SE

Freely programmable units of measure, e.g. pressure, CO2, m/sec. Memory capacity for 64,000 measured values, autscroll display, sensor supply from integrated batteries 2x 9V = 18V, external sensor supply possible.



HOTBOX HTH

Humidity and temperature up to 105°C. Stand-alone datalogger for high temperatures, robust aluminum casing, memory capacity for 64,000 measured values.

Contact us for information about dataloggers, sensors, accessories and alarm devices.

Head Office:

ELPRO-BUCHS AG
Langäulistrasse 62
CH-9471 Buchs SG
Switzerland

Tel: +41 81 750 03 11
Fax: +41 81 750 03 17
email: swiss@elpro.com
home: www.elpro.com