



Transfer printer

XD4 For double-sided printing.

Edition 5

2 Transfer printer XD4/300

For simultaneous printing of face and back of continuous material, labels, cardboard, textiles, synthetic materials and especially for continuous and prefabricated flat compressed heat shrink tubes.



1. Technical details

The handling, the electronic, the print heads and the mechanical components are extensively taken from the transfer printer A4+.

2. Material guide

Due to the centre alignment of the materials within the machine there is no need to adjust the print heads for different widths any more. The guides are placed directly behind the printing line. The adjustments are taken centrally with a spindle.

3. Shaft media roll

Appropriate for cores from 38 mm diameter. The material is placed in the roll retainer and automatically adjusted with the margin stop.

4. Material sensor

For identification of punching and reflecting marks as well as label start and end of material.

5. Ribbon

It is placed upon the three part tightening axle and adjusted with the positioning indicator. A spacer can be used alternatively.

6. Control

Identical printing data on front and back are automatically printed out in the right position. Not identical data is displayed juxtapositional on the screen and is transferred centre-aligned on both sides of the material. To reduce the wastage after loading labels or prefabricated heat shrink tubes the materials located between

gap sensor and lower print head can be labelled as well by designating the material gap.

7. Stand-alone operation

The layout of the labels is created either with the label software or directly on the PC. Label formats, fonts and graphic data, serial data and data base contents are saved on the CF memory card or on the internal IFFS printer memory.

Only the variable data is sent to the printer via keyboard or host computer before being printed out.

Peripheral devices - optimal accessories at full benefit



Cutter

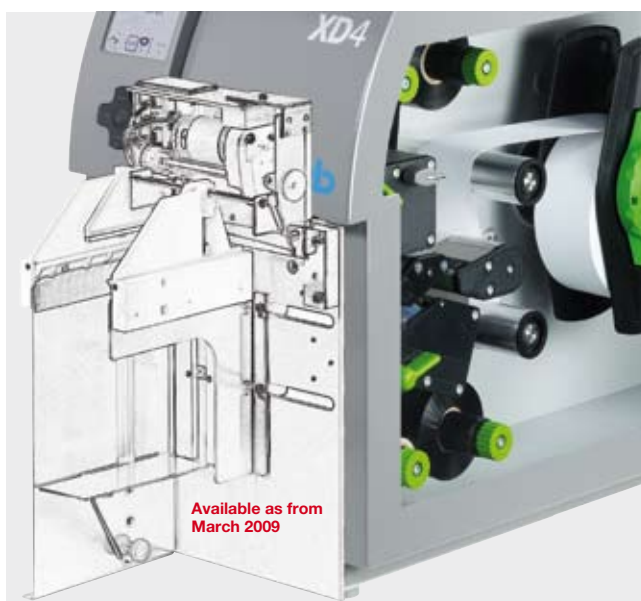
Paper, cardboard, textiles, synthetic materials and heat shrink tubes can be cut with the cutter.

Cutter for perforation and cut-off

The perforation cutter additionally perforates the material for manual tearing.

Cutter tray

The cutter tray can store up to 50 labels.



Stacker with cutter

The materials are cut with the cutter and piled up with the stacker.

The width of the stacking tray is adjusted with a spindle.

Material with a width from 20-100 mm, a length from 20-150 mm and a height up to 150 mm can be piled up (bigger heights of pile on request).

The print job stops when the height of pile is reached.

The storage table is adjusted to the label size.

The stacking tables must be adapted to the size of the labels.

Numerical keyboard



Connection: USB
No. of keys: 19
L x W mm: 120 x 76

Compact keyboard



Connection: USB
No. of keys: 86
L x W mm: 282 x 132
Cherry Classic Line
G84-4100 LCM

Standard keyboard



Connection: USB
No. of keys: 115
L x W mm: 460 x 192
Cherry G83-6504 LAD

Memory card



CompactFlash Type I

Label formats, fonts, texts and graphics can be saved. It can be accessed from the printer or from the PC.

4 Technical Data

Transfer printer XD4/300

1. Printhead			
Printing method		Thermal transfer	
Print resolution dpi		300	
Print speed up to mm/s		30, 40, 50, 75, 100, 125	
Print width up to mm		105.6	
2. Material			
Continuous rolls or fan-folded		Paper, cardboard, textile, plastic foils, PE, PP, PVC, PA, PI, tubes	
Weight g/m²		60 - 250 by cardboard	
Material thickness¹) mm		0.055 - 1.2	
Width:		continuous material¹) and flat pressed tubes¹) ab 0,4 thick mm	
Height mm		3 - 110	
Media roll:	Total diameter		
	spool / material mm	305 / 300	
	Core diameter mm	38 - 100	
	Winding direction²)	outside or inside	
Gap height: Label sensor, cutter mm		4.5	
3. Ribbon			
Ink		outside or inside	
Roll diameter up to mm		80	
Core diameter mm		25	
Ribbon length variable up to m		500	
Width mm		50 - 114	
5. Dimensions of the printer			
Height x Depth mm		395 x 554	
Width mm		248	
Weight kg		21	
6. Material sensor			
See-through sensor		for edge of the material or punching marks and end of material	
Reflective sensor from below		for printing marks	
Adjustable from the middle to the left in mm		0 - 53	
7. Electronics			
Processor high speed 32 Bit ColdFire/frequency MHz		266	
RAM MB		64	
Memory IFFS MB Flash		8	
Slot for memory CompactFlash-card Type I		■	
Slot for Wireless LAN-card		■	
Real time clock, printout of time and date		■	
8. Operation panel			
Buttons / Display:		Pause, Feed, Cancel, Menue, Enter, 4 x Cursor	
LCD-graphic display:	Weight x Height in mm	60 x 40	
	Text lines / characters	4 / about 20	
9. Interfaces			
Parallel Centronics bi-directional acc. IEEE 1284		□	
Serial RS232 C 1.200 up to 230.400 Baud/8 Bit		■	
USB 2.0 High Speed Slave for PC-connection		■	
Ethernet 10/100 Base T, LPD, RawIP-Printing, ftp-Printing, DHCP, HTTP, FTP, SMTP, SNMP, TIME, Zeroconf, mDNS, SOAP		■	
RS422, RS485 1.200 bis 230.400 Baud/8 Bit		□	
Peripheral connection		■	
WLAN card 802.11b/g WEP/WPA PSK (TKIP)		□	
USB Master for external operation panel, keyboard, and scanner		2x ■	

10. Monitoring		
Stop printing if	End of ribbon End of labels Printhead open	
On the Display	Data reception WLAN field intensity Ethernet state Used memory Temperature printhead Access to memory card Remaining quantity of ribbon	Clock Date sheet abc Debug Input buffer
11. Settings		
	Time, date, digital or analog clock. Country and language settings BE, BG, CH, CN, CZ, DE, DK, ES, FI, FR, GR, HR, HU, IR, IT, LT, MK, MX, NL, NO, PL, PT, RU, RS, SE, SI, TH, TR, UK, US, ZA system settings, print parameters, Interfaces, security	
12. Test routines		
	System diagnosis of memory and print head when switched on, Short Status, Status Print, font list, device list, WLAN state, profile of label, test grid, monitor mode, PPP state	
Status reports	Extensive status print with information about instrument setting, for example print length counter, runtime counter etc. Request of the machine status via software command. Detailed status messages on the display, for example network error-no link, barcode error etc.	
13. Fonts		
Font types	5 Bitmap fonts incl. OCR-A, OCR-B and 3 Vector fonts Swiss 721, Swiss 721 Bold and Monospace 821 available internally, loadable TrueType fonts. Optional Chinese (simplified Chinese) Optional Thai	
Character sets	Windows 1250 up to 1257, DOS 437, 737, 775, 850, 852, 857, 862, 864, 866, 869, EBCDIC 500, ISO 8859-1 up to -10 and -13 up to -16, WinOEM 720, UTF-8, Macintosh Roman, DEC MCS, KOI8-R. All West and East European latin, cyrillic, greek, hebrew and arabic characters are supported. Optional Thai and Chinese	
Bitmap fonts	Size of width and height 1 - 3 mm zoom 2-10. Orientation 0°, 90°, 180°, 270°	
Vector-/TrueType fonts	Size of width and height 0.9 - 128 mm variable zoom, Orientation 360° in steps of 1°	
Font formats	Bold, italic, underlined, outline, negative, grey, vertical, depending on character fonts	
Font width	Variable	

¹⁾ Critical materials or applications need to be tested and released.

²⁾ Depending on material winding inside or outside.

14. Graphics		
Graphic elements	Line, arrow, box, circle, ellipse, filled and filled with fading	
Graphic formats	PCX, IMG, BMP, TIF, MAC, GIF, PNG	
15. Codes		
Linear Barcodes	Code 39, Code 93 Code 39 Full ASCII Code 128 A, B, C Codabar EAN 8, 13 EAN/UCC 128 EAN/UPC Appendix 2 EAN/UPC Appendix 5 FIM HIBC	Interleaved 2/5 Ident- and lead code of german Post AG JAN 8, 13 MSI Plessey Postnet RSS 14 UPC A, E, E0
	2D-Codes	Aztec, Codablock F, Data Matrix, PDF 417, Micro PDF 417, UPS Maxicode, QR-Code, RSS 14 truncated, limited, stacked and stacked omnidirectional, EAN-Datamatrix
	All codes variable in height, module width and ratio. Orientation 0°, 90°, 180°, 270°. Optionally with check digit, printed characters and Start/Stop code depending on code type.	
16. Software		
Programming	J-Script direct programming	■
	abc-Basic Compiler	■
	Database Connector	□
System diagnosis/ Administration	printer monitoring	■
	Network Manager	□
cab Label software	cablabel R2 Lite	■
	cablabel R2 Pro	□
Additional Label software	Easylabel, Codesoft, Nicelabel, Bartender, Label Matrix, Labelview	□
Windows driver	2000, XP32/64 bit, 2003 32/64 bit, Vista 32/64 bit	■
Mac driver	OS X printer driver from version 10.3	■
Linux driver	Testet with Suse 9.0, CUPS based	■
17. Operation data		
Power supply	100 - 240 V ~ 50/60 Hz, PFC	
Energy consumption	max. 300 W	
Operation temperat.	10 - 35°C	
Humidity	30 - 85% not condensing	
Approvals	CE, FCC class A, CB, CCC, UL	

■ Standard □ Option

Cutter CU4

Power rating	
Cuttings/min.	120
Stop printing if:	unable to reach final position of cutter
Material	
Weight gr/m² by cardboard	60 - 500
Thickness mm	0.05 - 1.2
Width up to mm	110
cutting length mm	< 5
Outlet height up to mm	2.5

Perforation cutter and cutter PCU4

Power rating	
Cuttings/min. cutting perforating	120 150
Stop printing if:	unable to reach final position of cutter
Material	
Weight gr/m² by cardboard	60 - 300
Thickness mm	0.05 - 1.2
Width up to mm	110
cutting length mm	< 5
Outlet height up to mm	4.5
Perforating	
Web thickness mm	0.5
Root gap mm	2.5 / 10

Stacker with cutter ST4/M

Power rating	
Cuttings/min.	120
Stop printing if:	unable to reach final position of cutter cover open height of pile is reached
Material	
Weight gr/m² by cardboard	60 - 300
Thickness mm	0.05 - 0.8
Width mm	20 - 100
cutting length mm	20 - 150
Outlet height up to mm	2.0
Piling up	
Height mm	150



Innovative technology for a better climate protection, energy-saving, environmentally conscious.

The specifications are according to our current technical knowledge. They are subject to change.

6 Software tools

Printer Control

Direct programming with J-Script

J	Job Start
H 100	Speed (100 mm/s)
O R	Orientation rotated by 180°
S 11;0,0,68,70,100	Size of label (100x68 mm, gap 2 mm)
T 10,10,0,5,pt20;sample	Text object/font: Swiss bold, 20 pt
B 10,20,0,EAN-13,SC2;401234512345	Barcode EAN 13, size SC 2
G 8,3,5,0;R:30,9,0,3,0.3	Graphic, box 30 x 9 mm, Line strength 0.3 mm
A 1	Number of labels (in this example 1)

The printer language is easy to understand and integrate into your host system. Linkage of variable data with host application. Label design, graphics and fonts are recorded on the compact flash card. The host computer sends only the variable data to the printer.

abc - Basic Compiler

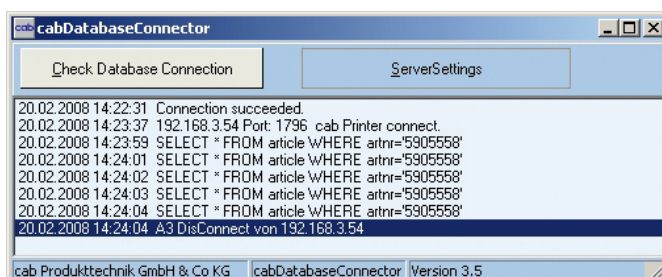
```
default.libl - Editor
Datei Bearbeiten Format Ansicht ?

<ABC>
DO
  LINE INPUT a$
  IF LEFT$(a$,15)=""194300301480070" THEN
    PRINT "R t2;";MID$(a$,16)
  ENDIF
  IF LEFT$(a$,15)=""194300300580172" THEN
    PRINT "R t3;";MID$(a$,16)
  ENDIF
</ABC>
```

As an integrated element of the firmware it enables the printer to process data via BASIC programming before being transmitted to print editing. Thereby external printer languages can be replaced or data from other systems, e.g. SPS, can be transferred to be printed on different label sizes.

Database Connector

The database connector enables stand-alone printers to link up data from a SQL-compatible database and to print. Data can be rewritten and modified simultaneously to the printing process.



Monitoring

Printer monitoring with Intra- and Internet

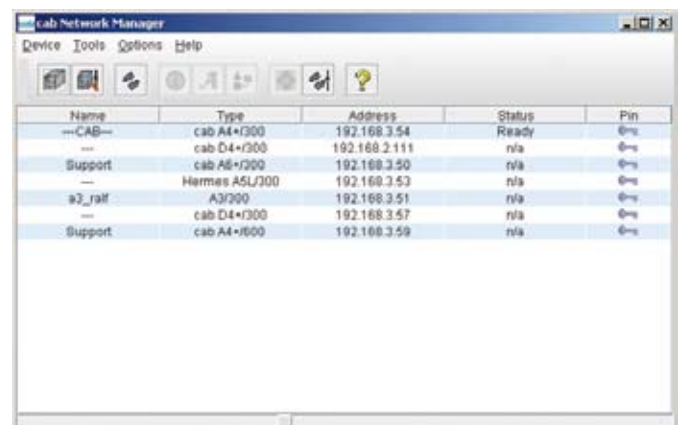


The integrated HTTP- and FTP-Server enables, with standard programs like web browser or FTP-clients, the print monitoring, configuration, the firmware-update and the administration of the memory card. Status signals, warning or error signals are sent to users or administrators either as email or SNMP-datagram via SNMP- and SMTP-clients.

Administration

Network Manager

The cab network manager enables the user to govern several printers within the network at the same time. It supports monitoring, configuration, firmware updates, memory card, datasynchronization and PIN-administration centrally.

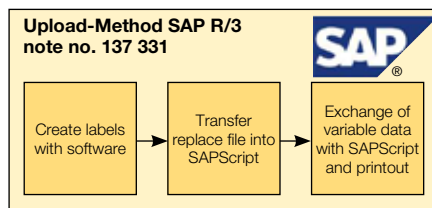


Windows driver



Create and print your label with a Windows program for ex. MS Word, Excel, Access, Works, Corel Draw etc. Windows printer driver are provided for 2000, XP 32/64 bit, 2003 32/64 bit, Vista 32/64 bit.

Integration into SAP R/3



cab developed together with SAP the "replacefile" application. This is a simple way to run cab printers with SAPScript out of SAP R/3.

The software to create labels



Perfect labels need optimized text fonts. cab offers a large number of bit-map and vector fonts. Height and width of the font can be scaled and the object can be positioned and arranged. Additional true type fonts can be downloaded to the memory card. Most of the country specific code-pages are supported.

● cablabel R2 Lite

Extensive standard label software. You get it - free of charge - with every cab printer.

● cablabel R2 Pro

Allows of the embedding of diverse data bases into a label. An assistant supports the creation of UCC/EAN 128 barcodes.

Whether simple texts, barcodes, graphics and the connection of databases, cablabel R2 is most flexible - all in 24 languages.

MDI (Multiple Document Interface) helps to open and handle several labels at the same time. Objects can be copied, moved and inserted into another label.

Additional label software

The transfer printer can also be easily controlled with Codesoft, Easylabel or NiceLabel.

cablabel R2	Lite	Pro
32-Bit Platform-compatibility		
Windows 2000 SP4,	■	■
XP Professionnel SP2		
Server 2003 SP2 and Vista 32 bit		
Country specific		
BE, BG, CH, CN, CZ, DE, DK, ES,	■	■
EE, FR, FI, GB, GR, HU, HR, IT, IL,		
JP, KR, LT, LV, MK, MX, NO, NL,		
PT, PL, RU, SE, SI, RS, TR, US, ZA		
Label samples	■	■
Online document. with tutorials	■	■
Multi-level Undo	■	■
number of levels	1	40
Graphic format import	■	■
Color support	■	■
Color graphic reduction		■
Text art		■
TrueType font	■	■
Graphic barcodes	■	■
numbers	9	37
Native printer barcodes	■	■
Hidden (not printable) objects		■
Label preview	■	■
Graphics preview	■	■
Grid view/print		■
OLE-Client		■
Windows driver support		■
Control of printers	1	99
Support of net printer (TCP/IP)	■	■
Bi-directional communication to the printer		■
Stand-alone		
Printing to file	■	■
Font Downloader	■	■
Database		
Database Manager		
Access, DBF		■
ASCII, ODBC, OLEDB		■
Variables		
Flexible date and time stamping	■	■
Host of date and time with		■
Date offset		
Printing counter	■	■
Host counter		■
Variable graphic images		■
Free variables		■
Global files		■
Decimal value formatting		■
Basic formula		■
User input fields		
Text alignment		■
Definition input format		■
Minimum input length		■
Selection of default values		■
Automatic input		■
Extras		
UCC/EAN 128 and Maxicode Assistant		■

8 Delivery program



Part No.	Hardware
5959640	Transfer printer XD4 M/300
Content of delivery:	Transfer printer, Power cable Type E+F, length 1.8 m Operating manual German/English
CD-ROM:	Operating manual in 17 languages Set-up German/English, Service manual German/English Spare part list German/English Programming manual English, Windows printer driver 32/64 bit in 19 languages for Windows 2000 / XP / 2003 and Vista, Database Connector English, cablabel R2 Lite in 24 languages, operating manual German, English, French, Spanish and Italian
Part No.	Expendable parts
5954072.001	Printhead 4/300
5954180.001	Print roller DR4
Part No.	Interfaces
5561041	WLAN-card 802.11 b/g
5954200	Parallel Centronics
5550818	Connection cable RS232 C 9/9-pin, length 3 m
5901616	Connection cable USB length 3 m



Part No.	Accessories
5948000	Cutter CU4
5960050.351	Perforation cutter PCU4/2.5
5960050.352	Perforation cutter PCU4/10
5541313	Stacker with cutter ST4/M
5917909	Numerical keyboard USB
5901630	Compact keyboard USB, Cherry Classic Line G84-4100 LCM
5901626	Standard keyboard USB Cherry G83-6504 LAD
5561043	Memory card CompactFlash Typ I
On this account the operation and the compliance with CE-standards is only warranted by using cab-made materials or materials recommended by cab.	
Part No.	Software
5580212	Database Connector
5580215	Network Manager
5580221	Label software cablabel R2 Pro
9008486	Programming manual english, printed copy

The specifications are according to our current technical knowledge. They are subject to change.

Germany

cab Produkttechnik
GmbH & Co KG
Postfach 1904
D-76007 Karlsruhe
Wilhelm-Schickard-Str. 14
D-76131 Karlsruhe
Telefon +49 721 6626-0
Telefax +49 721 6626-249
www.cab.de
info@cab.de

France

cab technologies s.a.r.l.
F-67350 Niedermodern
Téléphone +33 388 722 501
www.cab.de
info@cab-technologies.fr

España

cab España S.L.
E-08304 Mataró (Barcelona)
Teléfono +34 937 414 605
www.cab.de
info@cabsi.com

USA

cab Technology Inc.
Tyngsboro MA, 01879
Phone +1 978 649 0293
www.cabtechn.com
info@cabtechn.com

South Africa

cab Technology (Pty.) Ltd.
2125 Randburg
Phone +27 11-886-3580
www.cab.de
info@cabtech.co.za

Asia 亞洲分公司

希愛比科技股份有限公司
cab Technology Co., Ltd.
台灣台北縣板橋市民生路一段
Panchiao 220, Taipei, Taiwan
電話 Phone +886 2 2950-9185
網址 www.cabasia.net
詢問 cabasia@cab.de

China 中国

铠博(上海)貿易有限公司
cab (Shanghai) Trading Co., Ltd
上海市延安西路2299号11C60室
电话 Phone +86 21 6236-3161
询问 cabasia@cab.de